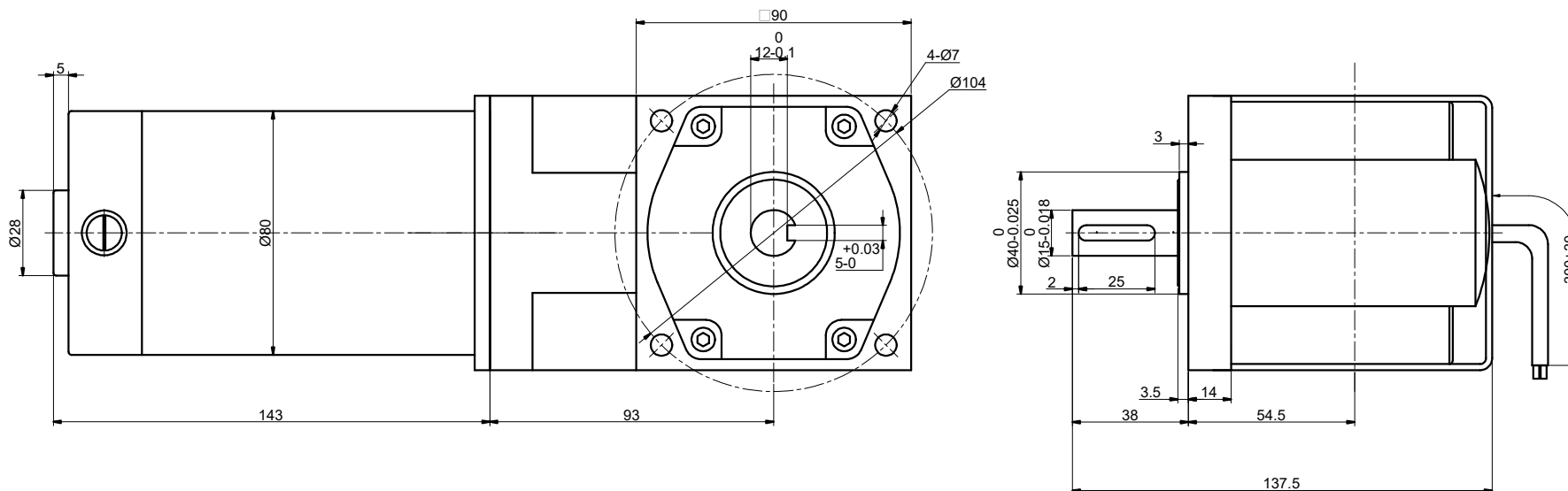


MODEL NO. F5D90-12GU-18S/5GU50RT DWG NO. A6819

CUSTOMER'S MODEL: NO MODEL
END COVER COLOR: BLUE

REV.	REVISION RECORD	BY	DATE
0	ORIGIN	ZPJ	4.30.2026



SPECIFICATION	VALUE
RATED VOLTAGE(V):	12
RATED POWER(W):	90
RATED LOAD SPEED(RPM):	36
RATED LOAD TORQUE(N.m):	14.60
RATED CURRENT(A):	10.00
GEAR RATIO	50
MAX.PERMISSIBLE TORQUE(Nm)	20
AMBIENT TEMPERATURE	-10°C~40°C[14°F~104°F]
INSULATION CLASS	B 130°C[266°F]
TEMPERATURE RISE	MAX.80°C

COMMENT:
1.DYNAMIC AXIAL LOAD: 10N MAX
2.DYNAMIC RADIAL LOAD @ SHAFT LENGTH 20mm: 20N MAX
3.INSULATION RESISTANCE (NORMAL TEMPERATURE AND HUMIDITY): 100 Mohm
4.DIELECTRIC STRENGTH: AC600V CUT OFF CURRENT 5mA FOR 1S

DIMENSIONS ARE IN MILLIMETERS.
TOLERANCES AS BELOW:
DECIMALS ANGLES
X ±0.5 ±2°
X.X ±0.25
X.XX ±0.13

THIRD ANGLE PROJECTION

STEPPERONLINE®

GEARED DC MOTOR

F5D90-12GU-18S/5GU50RT

THIS DOCUMENT SHALL NOT BE REPRODUCED NOR SHALL THE INFORMATION CONTAINED HEREIN BE USED BY OR DISCLOSED TO OTHERS UNLESS EXPRESSLY AUTHORIZED IN BY WRITING STEPPERONLINE.

SIGNATURE		DATE
DRN	ZPJ	4.30.2026
APVD	LJ	4.30.2026

REV.	0	SCALE	1:1	DWG NO.	A6819
------	---	-------	-----	---------	-------